

# HORNET

Sports Lighting Luminaire



**Applications:** Professional sports arenas, university and college sports fields, gymnasiums, field houses, high mast lighting, airports

## PERFORMANCE SUMMARY

The Hornet Sports luminaire blends extreme optical control, advanced thermal management and modern, clean aesthetics.

Built to last, the housing is a rugged high purity aluminium with versatile mounting configurations that offer simple installation while an intelligent network interface allows seamless high level control.

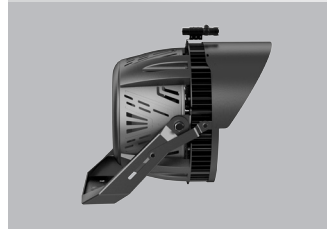
The Hornet is an advanced upgrade for HID applications with fewer fixtures consuming far less energy

## Construction

- Cold forged high purity aluminium improves heat management, preventing long term system degradation
- Modular installation system designed for easy assembly on new construction or pole retrofits
- IP66 rated optics and fixture
- Hinged, compartmented release door with tool-less entry
- Finished in polyester powdercoat process withstanding extreme weather while providing optimal color and gloss retention

## Electrical

- 100-277VAC or 277-480VAC
- Average rated life L70/B50 at 77°F: 100,000H
- Operating Temperature: -40°F to 122°F
- Premium driver featuring input surge, output over-voltage, short circuit and over temperature protection
- 4kV standard surge protection; 20kV available
- Zero interference circuitry eliminates electromagnetic disturbances
- High level wireless communication technology for remote monitoring, control and maintenance



## Specification

Lumen Package	45,000 - 181,250
Wattage Range	300 - 1,250
Efficacy	145-157
Weight lbs (kg)	28.6 (13.0) - 51.7 (23.5)

## Optical

- Engineered optics provide uniform illumination with minimal light spill in NEMA 2/3/4/5/6
- Optional laser guided aiming pointer
- High frequency flicker free output suitable for broadcast

## PRODUCT CODE

Example Hornet cat. 100.400.N4.50.BL.SL.0.0

Model No	Voltage	Wattage (W)	Distribution	CCT (°K)	Finish	Mounting	Options	Controls
Hornet	100	300 - 300W/45,000L	N2 - Nema 2	40 - 4000	BL - Black	SL - Slipfitter	RD - Remote Driver	DMX - DMX
	100-277V	400 - 400W/60,000L	N3 - Nema 3	50 - 5000	WH - White	YK - Yoke		SN - SkyNet
	480	500 - 500W/75,000L	N4 - Nema 4	57 - 5700			LG - Laser Guide	0 - None
	277-480V	600 - 600W/90,000L	N5 - Nema 5				SPD - 20kV Surge Protection	
		750 - 750W/108,750L	N6 - Nema 6				0 - None	
		1000 - 1000W/145,000L						
	1250 - 1250W/181,250L							



# HORNET

Sports Lighting Luminaire

## LUMEN OUTPUT

System Watts	4000K		5000K		5700K	
	Lumens <sup>1</sup>	Efficacy LPW	Lumens <sup>1</sup>	Efficacy LPW	Lumens <sup>1</sup>	Efficacy LPW
300	45,000	150	45,900	153	47,277	157
400	60,000	150	61,200	153	63,036	157
500	75,000	150	76,500	153	78,795	157
600	90,000	150	91,800	153	94,554	157
750	108,750	145	110,925	148	114,253	152
1000	145,000	145	147,900	148	152,337	152
1250	181,250	145	184,875	148	190,421	152

<sup>1</sup>Initial delivered lumens at 25°C (77°F). Actual production yield may vary between -10 and +10% of initial delivered

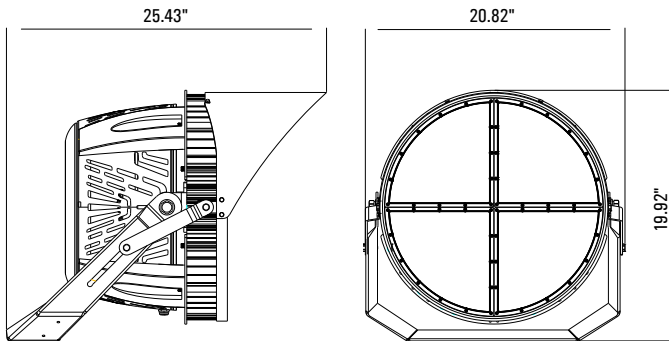
## EPA

	300-600W	750-1,250W
Effective Projected Area <sup>2</sup>	0.98 (sq.ft)	1.53 (sq.ft)
Approximate Weight	28.6 lbs. (13.00 kgs.)	51.7 lbs. (23.50 kgs.)
Module Count	1	4

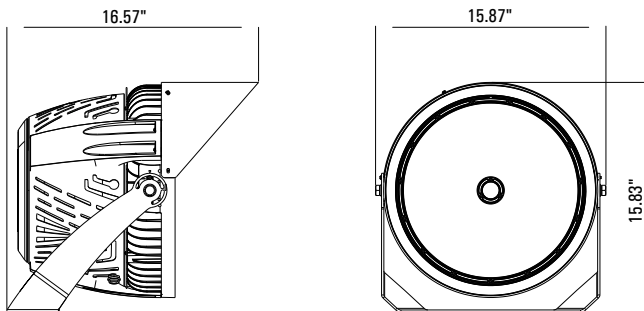
<sup>2</sup>Including luminaire head and yoke bracket. Contact factor for other bracket EPA data

## DIMENSIONS

### 300-600W

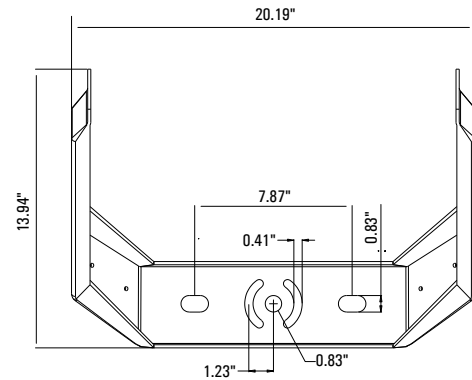


### 750-1250W

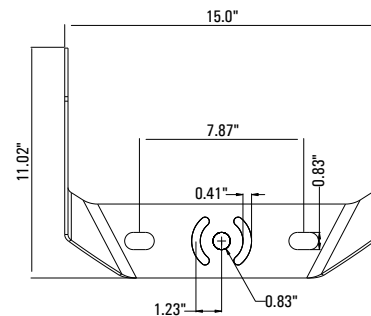


## DRILL PATTERN

### 300-600W



### 750-1250W

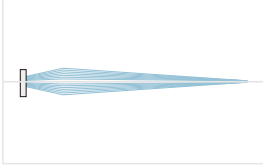


# HORNET

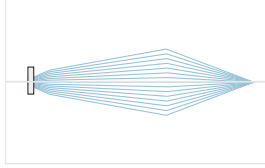
Sports Lighting Luminaire

## DISTRIBUTION

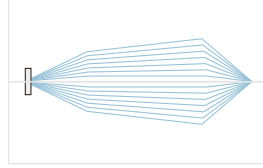
Nema 2



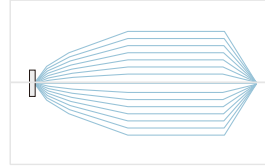
Nema 3



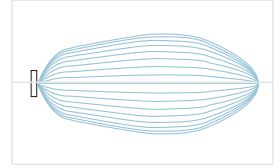
Nema 4



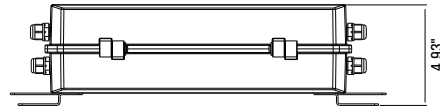
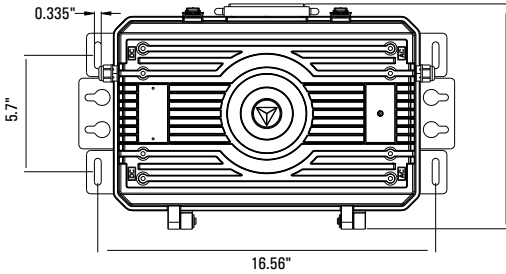
Nema 4



Nema 5



## REMOTE DRIVER



The SkyNet enabled by Synapse Wireless Lighting Control System is the perfect solution for commercial, industrial and municipal applications, such as: auto dealerships, parking lots, garages, shopping complexes and warehouses.

SkyNet utilizes robust wireless communication via 2.4 GHz Self-Healing Mesh Network which not only increases reliability and accuracy of system, but also eliminates single point of failure.

The flexibility of the system make it perfect for new construction and retrofit projects. The user-friendly SkyNet web application is accessible through any device with an internet connection and allows for complete customization of the system's features.

Some capabilities of the system include: occupancy/vacancy sensing, daylight harvesting, scheduling, high-end trim, dimming, zone control, BMS integration and energy monitoring.

## The SkyNet System

### Wireless controls & sensors



Wireless & Override Switches



Occupancy/Vacancy & Daylight Sensors



SkyNet-integrated Fixtures



SkyNet-compatible Fixtures



Zone Controllers

### Centralized control & integration



Site Manager Controller

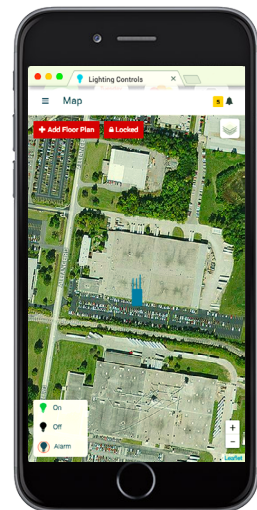


Gateway Module



WiFi, Cellular or Ethernet Connection

### Simple-to-use software



SkyNet Site Manager: Lighting control web app

